



## **TMF20 RDSERVICE Setup**

### **User Guide**

Pre-Requisites: .....	2
TMF20RDSERVICE Installation .....	2
Troubleshooting:.....	7

## Pre-Requisites:

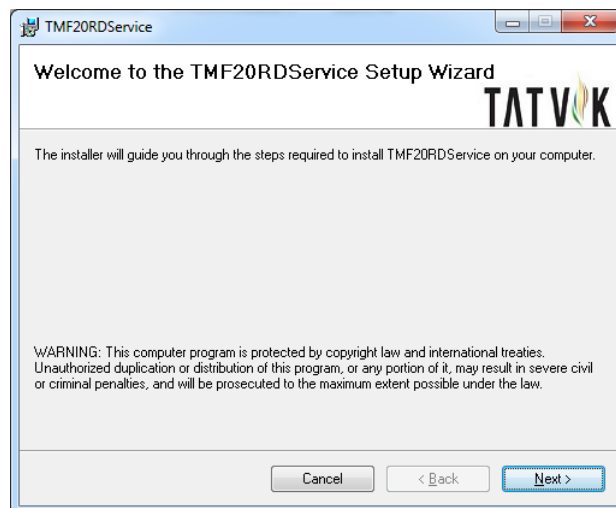
1. JRE/Java version : Java 7 or Java 8
2. .NET Framework 3.5
3. VCRedist 2008

Above prerequisites available at <https://rd.tatvikbiosystems.com> for download.

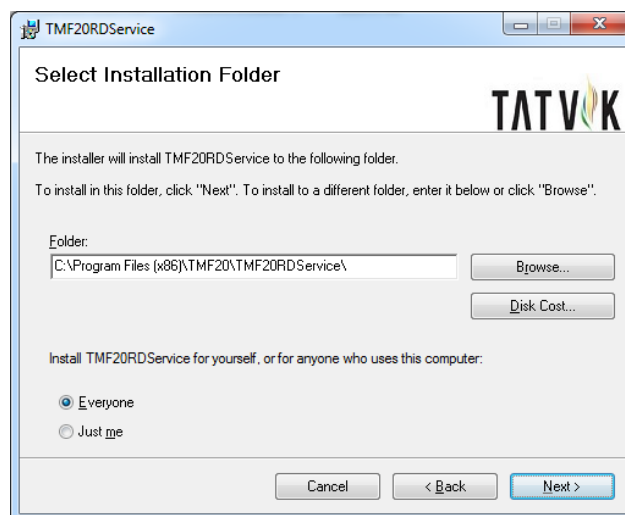
## TMF20RDSservice Installation

Extract zip file and click on Setup.exe file. A window appears as Prepare to install then

Click on Next

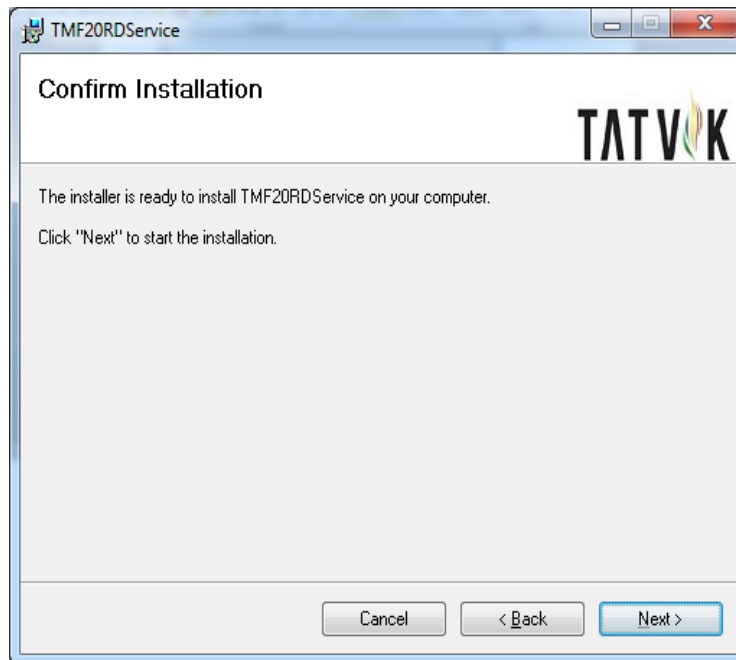


Click on Next

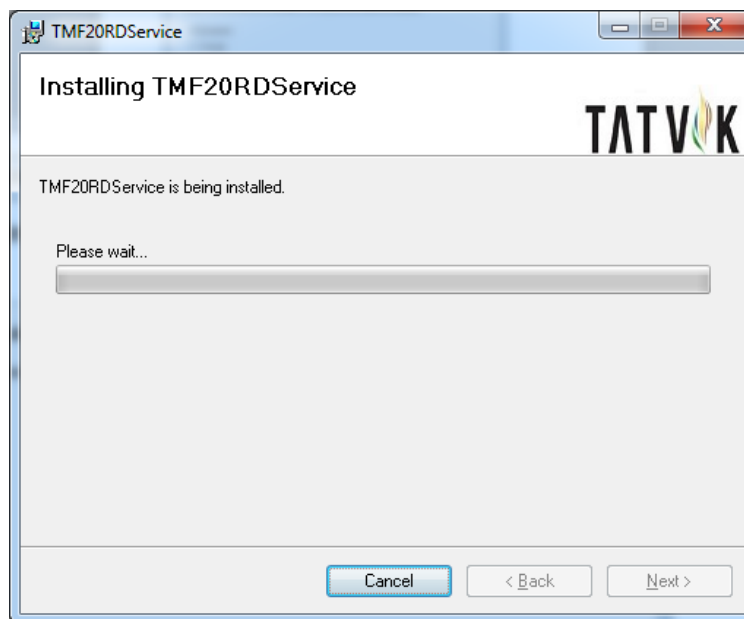




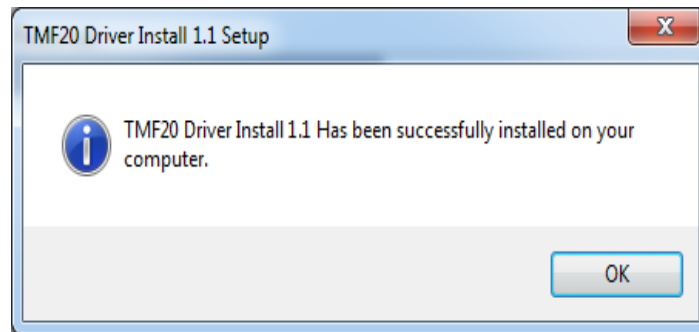
In Confirm Installation, Click on Next



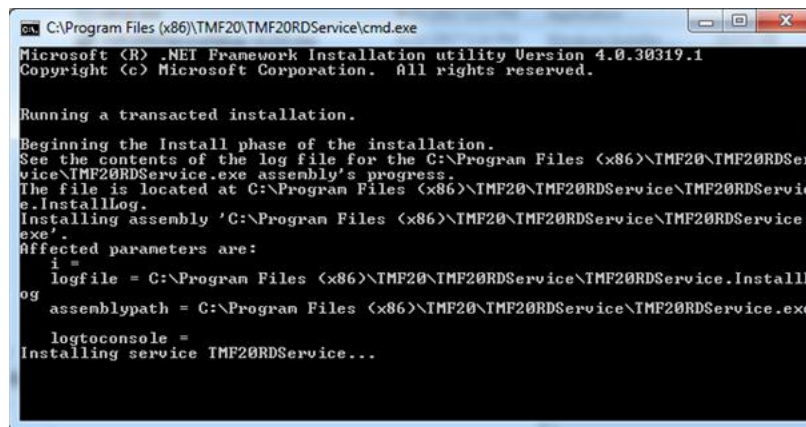
Installation Progress



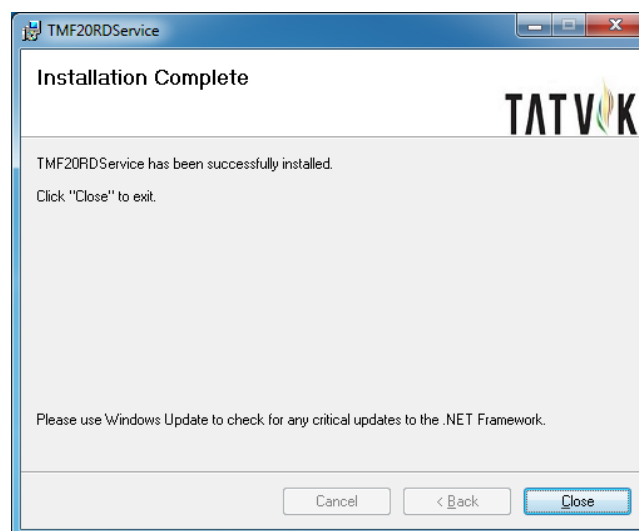
During installation, an alert appears for TMF20 driver installation as below.  
Click OK



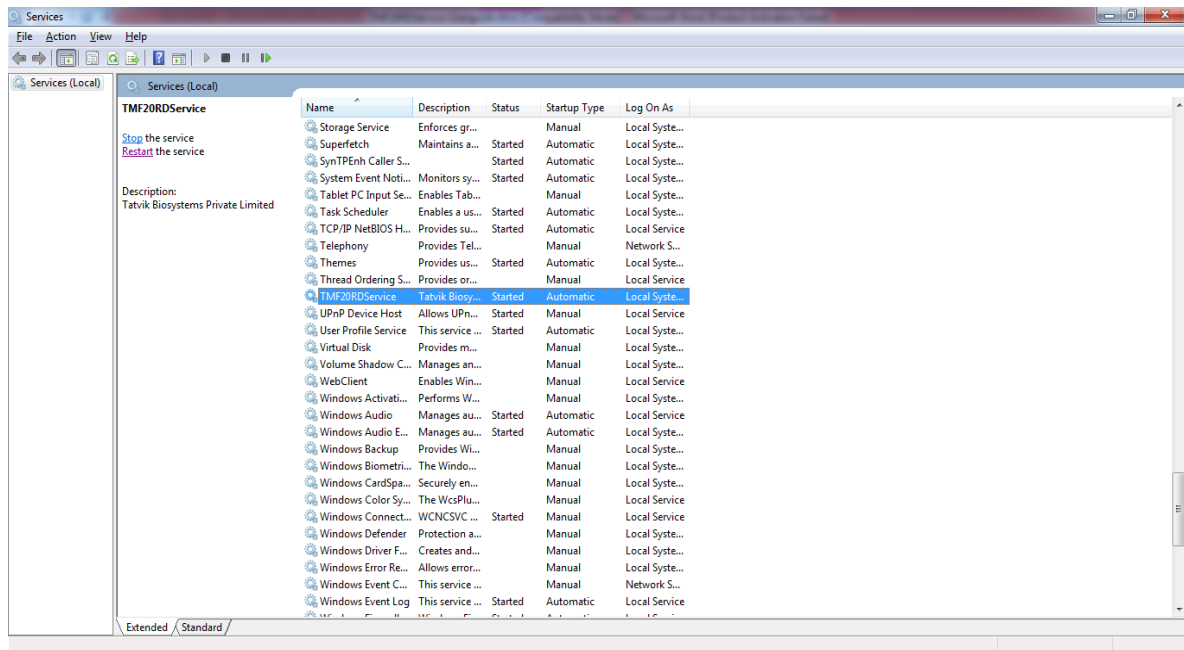
After clicking OK, a command Prompt will appear as below and don't close the Prompt.



Installation Complete



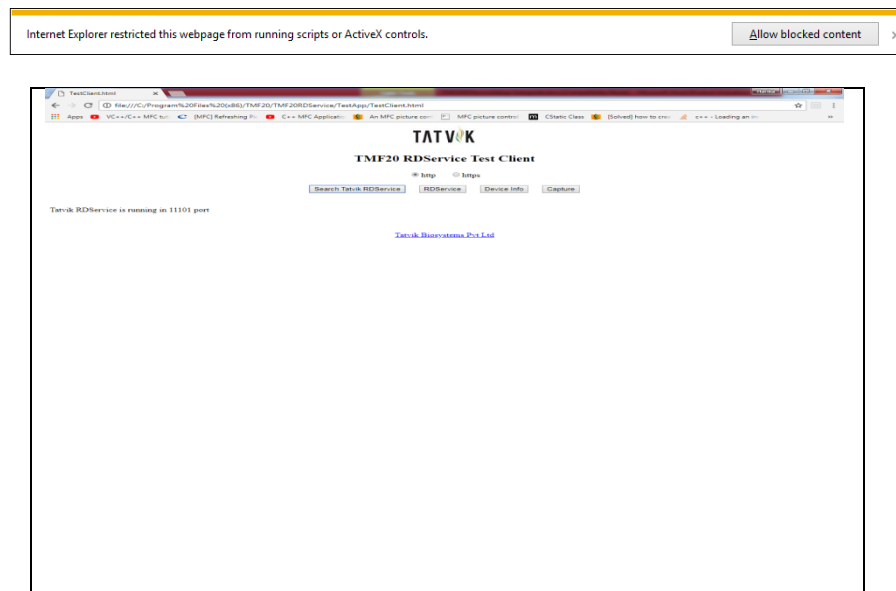
After installation is completed, check TMF20RDSservice in Windows services (services.msc)



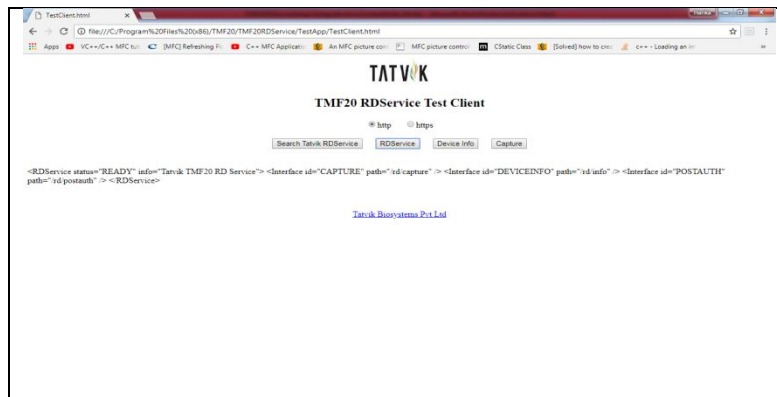
## Troubleshooting:

### 1. How to verify RD service and device is working?

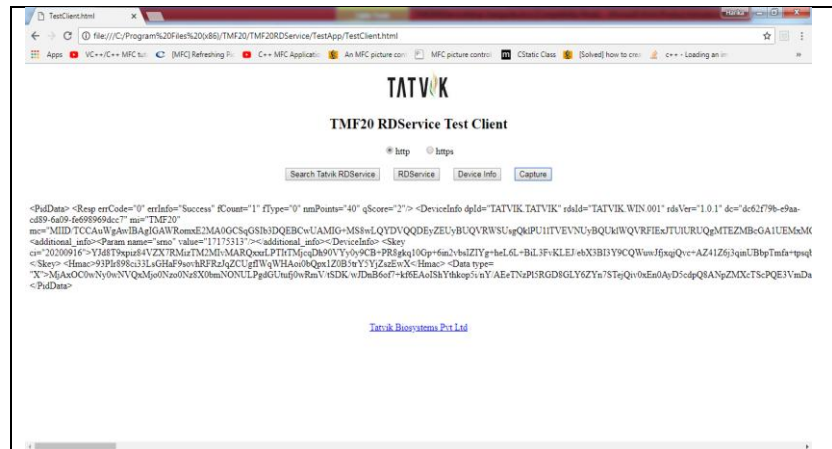
- Using Internet Explorer, open file **C:\Program Files (x86)\TMF20\TMF20RDSservice\TestApp\TestClient.html**
- Click on “Allow Blocked Content”
- Click the radio button http
- Click on Search Tatvik RDSservice



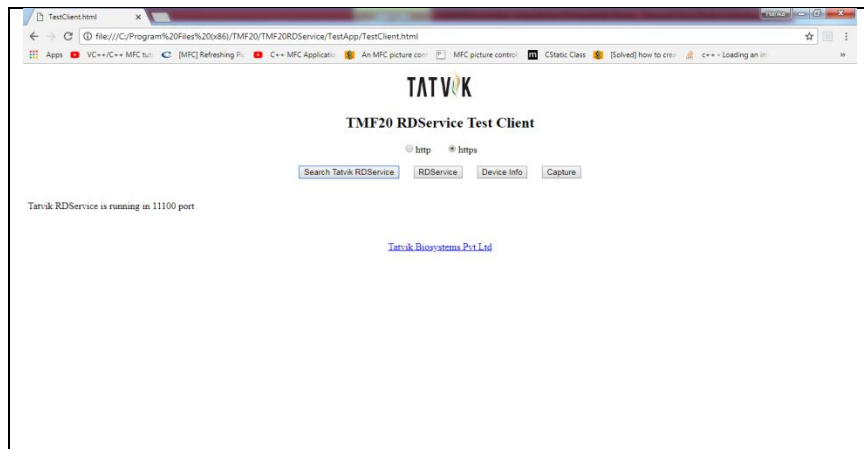
- Now Click on RDSservice



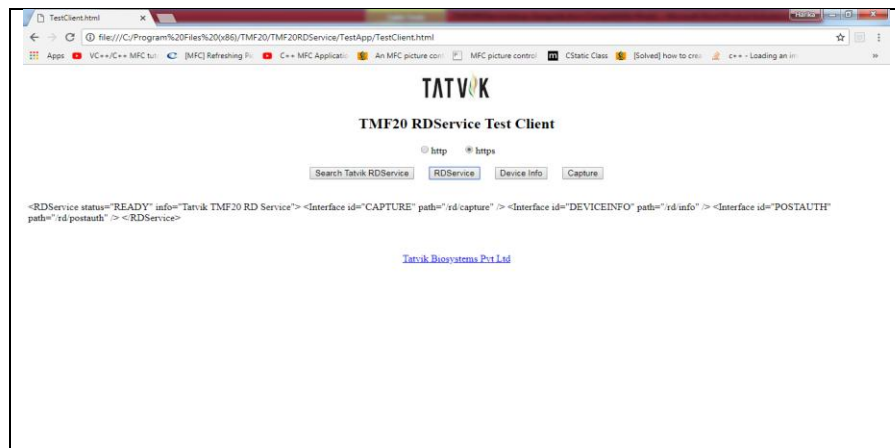
- Click on Device info or Capture



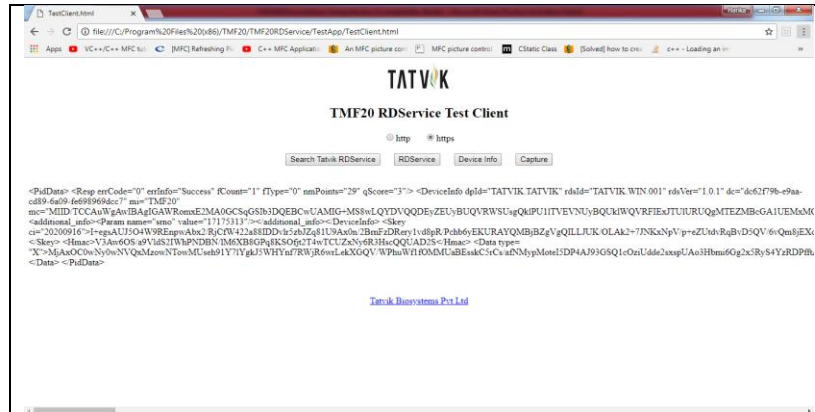
- Now Click on the radio button https then click on Search Tatvik RDSERVICE



- Now Click on RDSERVICE



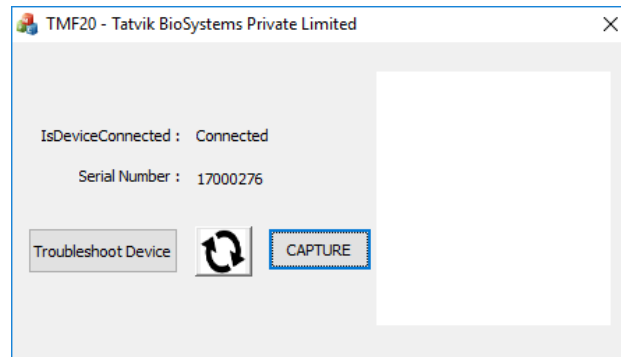
- Click on Device info or Capture



## 2. How to verify device is functional?

Run test application from **C:\Program Files**

**(x86)\TMF20\TMF20RDSservice\bin\TMF20TestApp.exe**



## 3. Support Details

- Please visit <https://rd.tatvikbiosystems.com/>
- Call or Whatsapp us at 9999436664